

- *Isaiah 43:19*



Westminster Presbyterian  
Generosity 2026

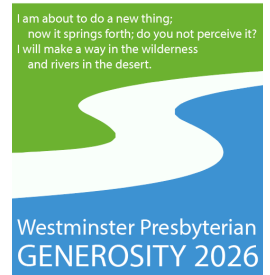




Dear Westminster Families,

We follow a Word that says,

*"I am about to do a new thing;  
now it springs forth; do you not perceive it?  
I will make a way in the wilderness  
and rivers in the desert."*



We are people with a vision. We are people who trust and live out God's Word. By doing so, we see "a way in the wilderness" and the "rivers in the desert." We may even become the way and the water for others Living Out the Word.

It is exciting to see how our staff at Westminster has been motivating us towards seeing and doing some of God's remarkable "new things!"



- Guy Griffith and Will Wellman have been expanding our engagement in forming our faith.
- Adam Devries has been busy expanding our youth team with three great new leaders. I hope you will reach out and get to know Jessie King, Julius Hooper, and Nathan Scott. They are impressive!
- Sophie Maness and Ashley Higgins are leading exciting faith-forming ministries for our families and children. It's great to see the vibrancy that children bring to our congregation!
- Stephanie Boaz brings great joy and love to our members as our new full-time Associate Pastor for Congregational Care.
- Under John Semington's leadership, our music ministry continues to inspire us every Sunday. Our favorite Valentine's show is returning in 2026. Funds raised from this program are earmarked for a prestigious invitation extended by Norwich Cathedral in Norwich, England to the Adult and Laudate Youth Choirs to serve as Choirs-in-Residence for a week in July 2027.
- Joel Rayburn and our hardworking communications team produces podcasts and videos that reach out to our community, detailing our mission and ministries. Our presence on social media has expanded and is gaining worldwide attention!
- Will has begun a gardening project partnering with the Hillwood Presbyterian Church. Look for ways you can become involved in moving the earth!
- Joy in Learning adds new and intergenerational opportunities all the time. Our cafe is bustling with imaginative ways for you to engage in the amazing community life of the church.
- We currently have a search committee looking for a new addition to our ministry team, an Associate Pastor of Faith Formation. Please keep the committee in your prayers.
- Through a gift, we are pursuing the employment of an Engagement Director, who will facilitate mission and ministry opportunities.



On top of all our new ministries, we have been able to do some much-needed property enhancements around the campus. Next year, we will be looking at the replacement of several areas of the roof on the Church building. The costs associated with our amazing facility continue to go up. We are grateful for how you have stepped up to keep us going and growing. We hope you can consider a **4% increase** in your support. God is doing a new thing that we need to discover together!

Peace,

Donovan



# In 2026 we expect:

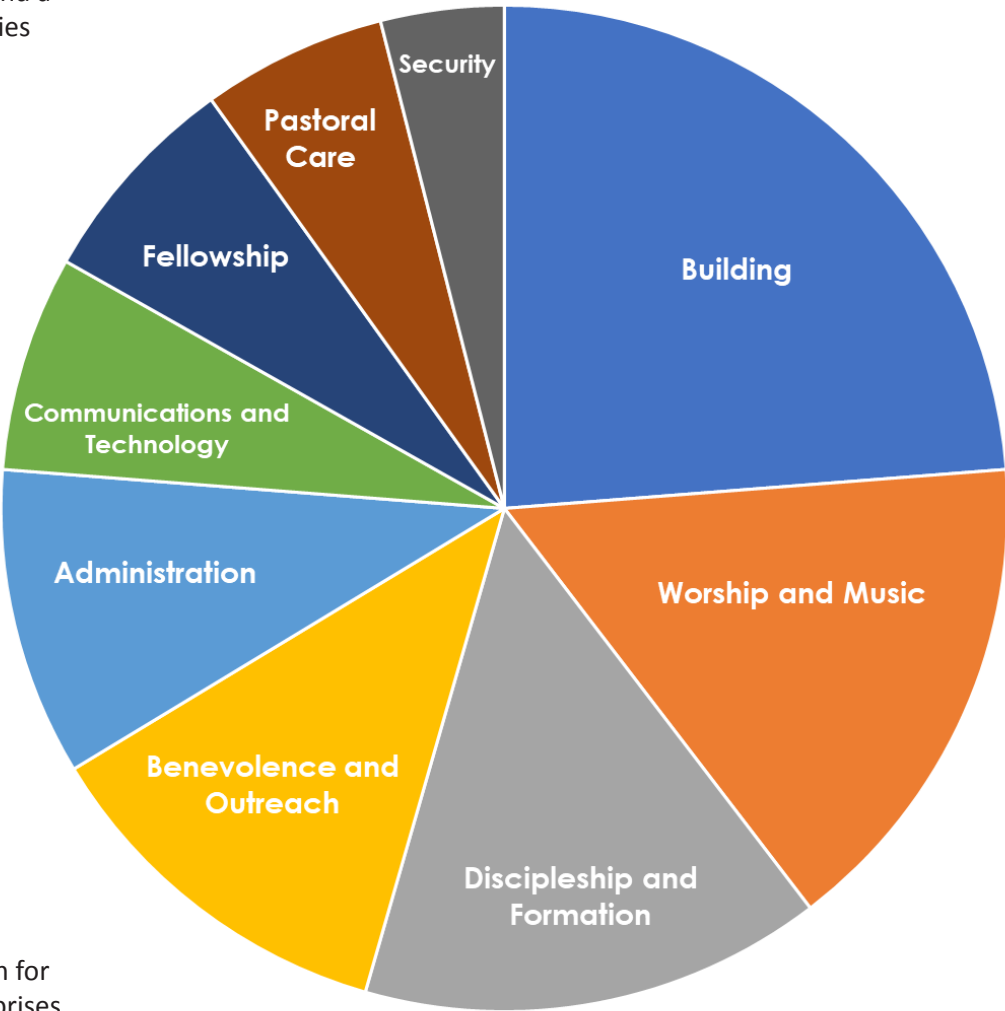
For 2026, we've proposed a \$4.5 million budget—an increase of 4% from 2025—to meet our community's growing needs. This plan invests in rising operational costs, enhanced staff compensation and benefits, and key new roles: an Associate Pastor of Faith & Formation, an Engagement Director, and a fully staffed Youth Ministry through our partnership with the Center for Youth Ministry Training. It also supports expanded programs, stronger communication efforts, and vital resources for safety and building operations. Together, these investments strengthen our mission and position us for growth, connection, and impact in the year ahead.

## Did You Know?

Our 2026 budget reflects our commitment to nurturing our community's mission and ministries through thoughtful resource allocation. Below is a concise yet comprehensive overview of key areas:

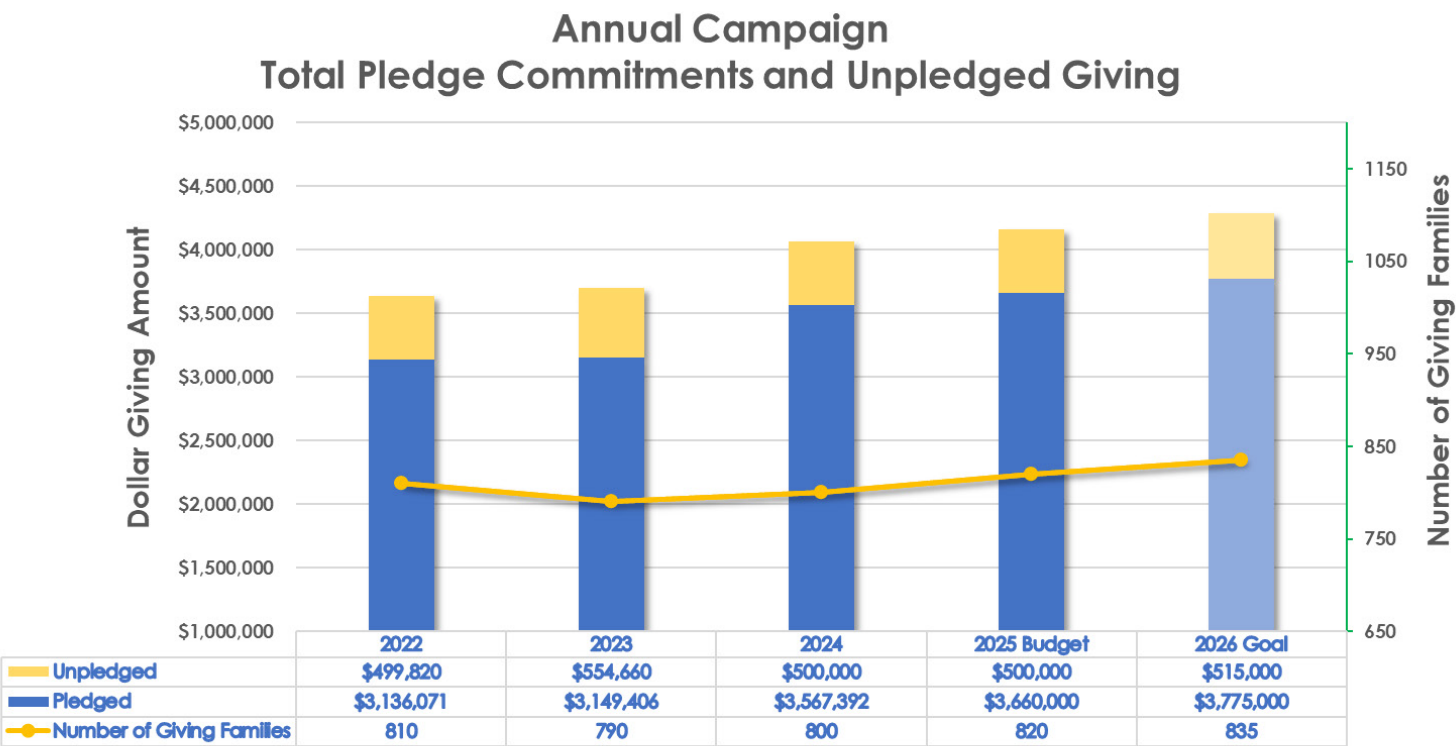
- **Worship & Music:** Worship and music, the heartbeat of our community, account for 16% of our budget. This covers leadership salaries, choir section leaders, music resources, bulletin printing, organ maintenance, and online streaming to inspire and connect our congregation.
- **Building Costs:** Maintaining our sacred church space represents 24% of our budget. These funds support ongoing maintenance, equipment repairs, and a dedicated staff to ensure our facilities remain functional and welcoming.
- **Utilities:** Utility costs are projected at \$275,000 to keep our spaces comfortable. This includes \$95,000 for heating and \$145,000 for cooling, ensuring a hospitable environment year-round.
- **Insurance:** Insurance costs, estimated at \$135,000, reflect a 10-12% increase. This investment protects our facilities and ministries against unforeseen challenges.
- **Benevolence:** We give over \$750,000 annually to benevolence partners, with \$506,000 from the operating budget and \$250,000 from member gifts. These contributions extend our mission of service to those in need.
- **Staff Compensation:** Compensation for our 60 full and part-time staff comprises 47% of the budget, with an additional 15% for benefits. This supports their well-being and dedication to our community's mission.

Proposed 2026 Budget



# A Journey of Generosity: Past, Present, and Future Giving

Over the past four years, our community’s generosity has been captured in the annual giving trends, both through pledged and unpledged contributions. These figures, illustrated in the accompanying graphs, tell a story of steadfast support and evolving commitment. Looking ahead, the data also projects the anticipated giving for 2025, building on the momentum of previous years. For 2026, we’ve set an ambitious yet achievable goal, reflecting our shared vision for growth and impact. These numbers not only highlight our past and present but also chart a hopeful path forward for our collective mission.



The chart below tells the story of a deeply generous congregation. Every gift adds strength to the fabric of ministry we create as a community of faith.

	2024	
Giving Range	Number of Families	Amount Given
\$1-\$1,999	381	\$241,535
\$2,000-\$4,999	185	\$566,008
\$5,000-\$7,499	97	\$566,110
\$7,500-\$9,999	38	\$315,516
\$10,000-\$14,999	45	\$513,580
\$15,000-\$19,999	25	\$405,170
\$20,000+	49	\$1,460,000
Total	820	\$4,067,919